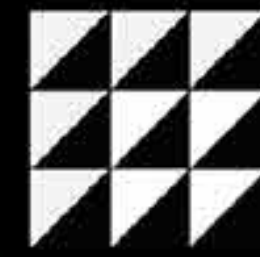


A **Work of Art** Thirty-Storeys High



SALCEDO SQUARE



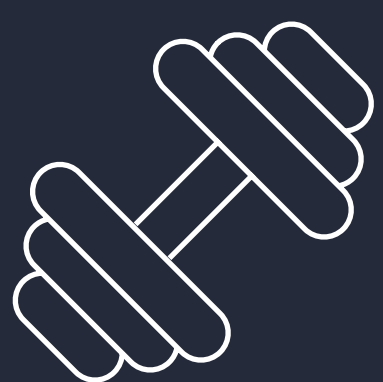
Towering High at the Heart of Makati

Salcedo Square stands proud from its roost on L.P. Leviste Street, at the center of Salcedo Village. The location affords the residents an escape from the commotion of work – without being too far from it. It is peppered with cafés and parks that on weekends, become the joggers' haven and Makati's weekend food-and-flea market.

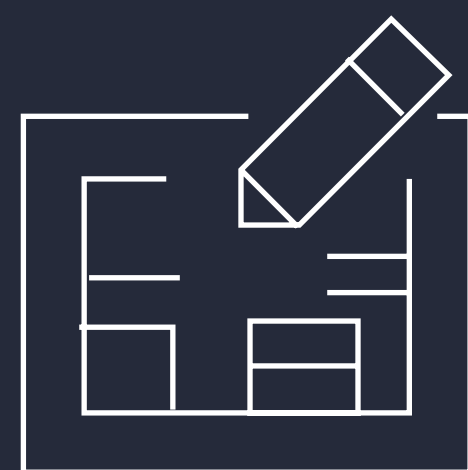
It is close to schools like the Ateneo Graduate School, Assumption College, Mapua Institute of Technology and the British School of Manila. The Makati Medical Center and Ospital ng Makati stand nearby for healthcare. The best hotels are within walking distances -- Raffles Hotel, Makati Shangri-La Manila and The Peninsula Manila, to name a few. Also nearby are museums, like the Ayala Museum and the Luz Gallery and sports clubs like the Makati Sports Club and Manila Polo Club.



Location Map



Amenities



Unit Floor Plans

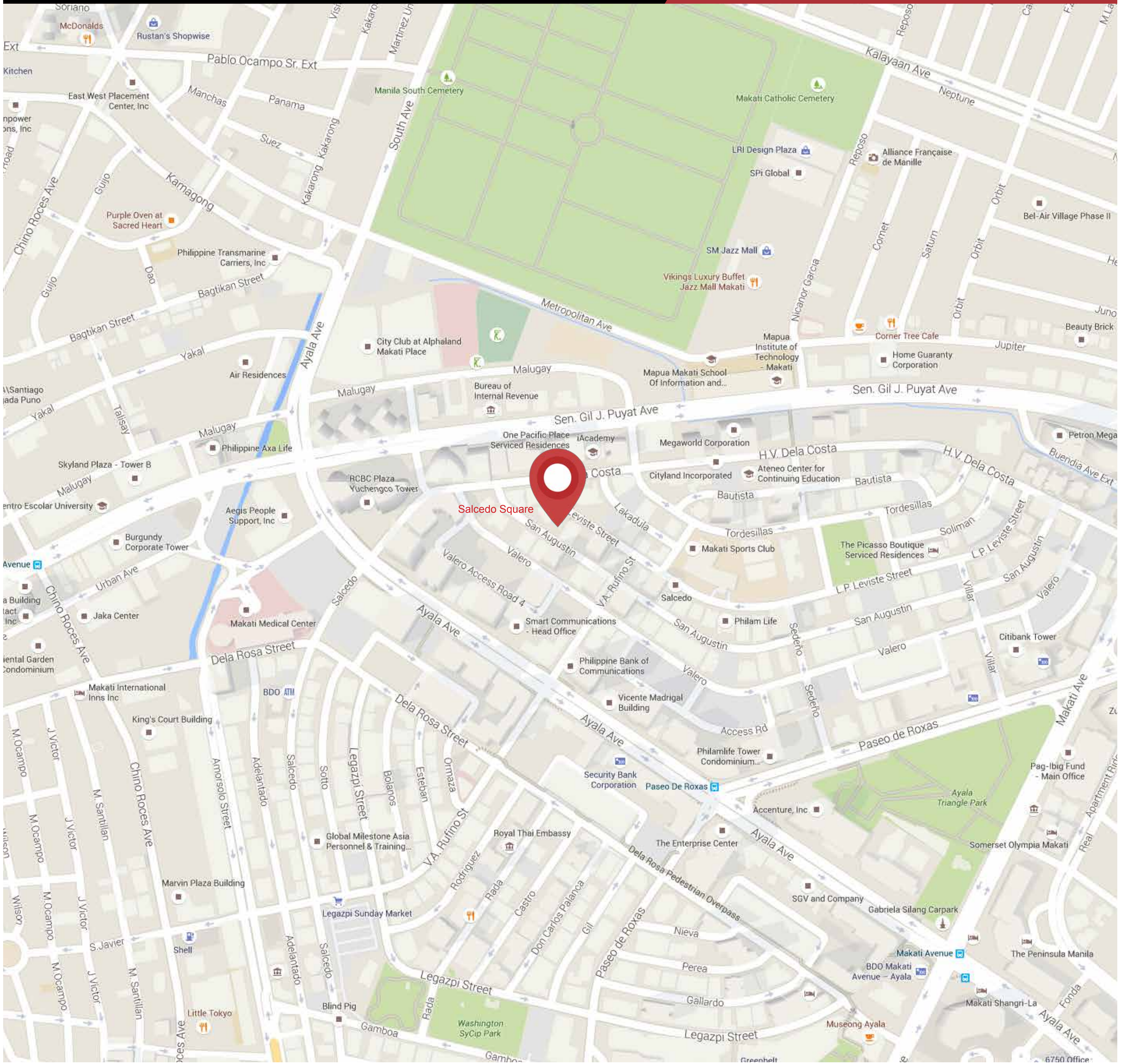


Typical Floor Plans

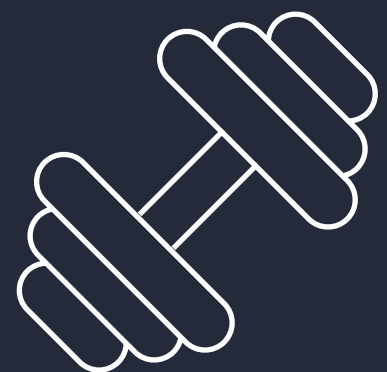


SALCEDO SQUARE

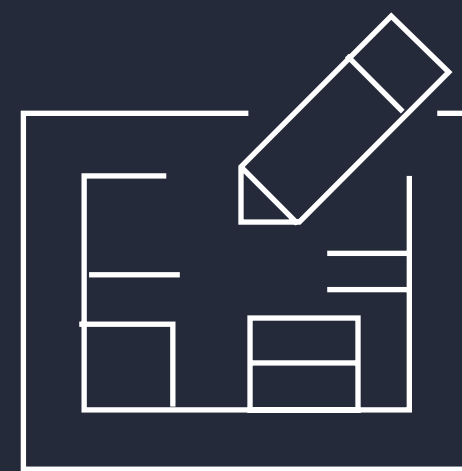
Location Map



Location Map



Amenities



Unit Floor Plans



Typical Floor Plans



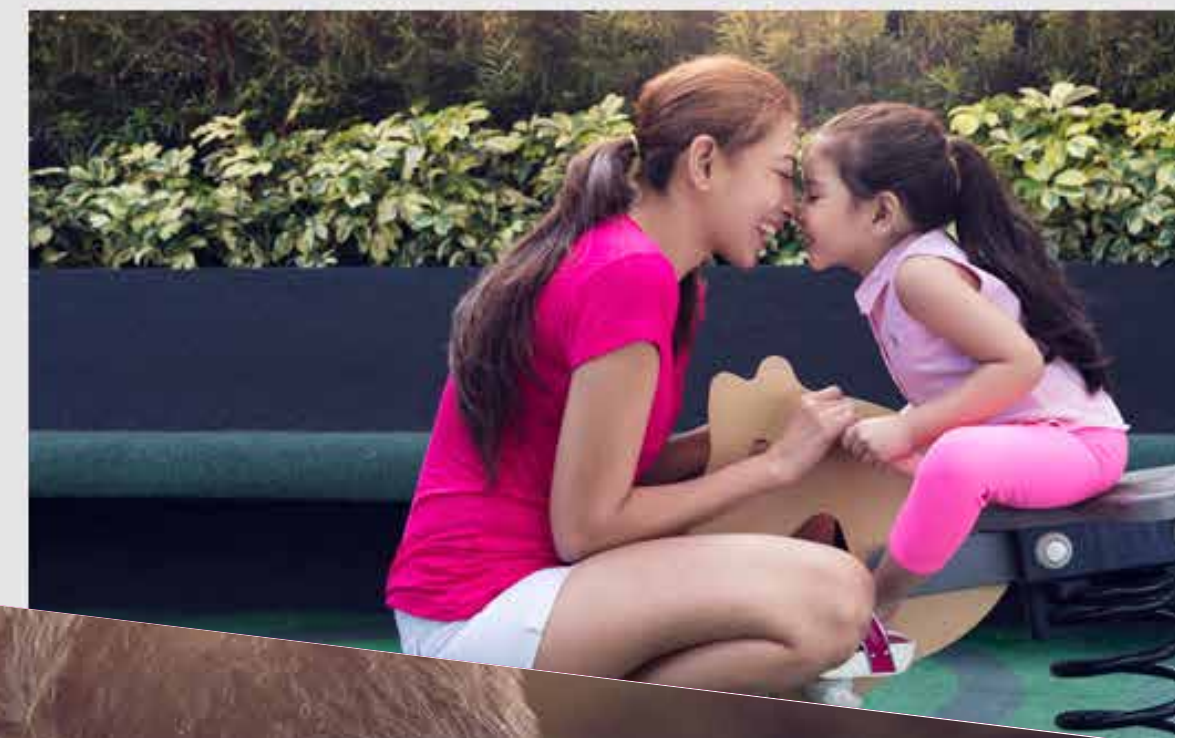
Amenities

Located where business and rejuvenation converge



AMENITIES

Lorem ipsum dolor sit amet, consectetur adipisicing.

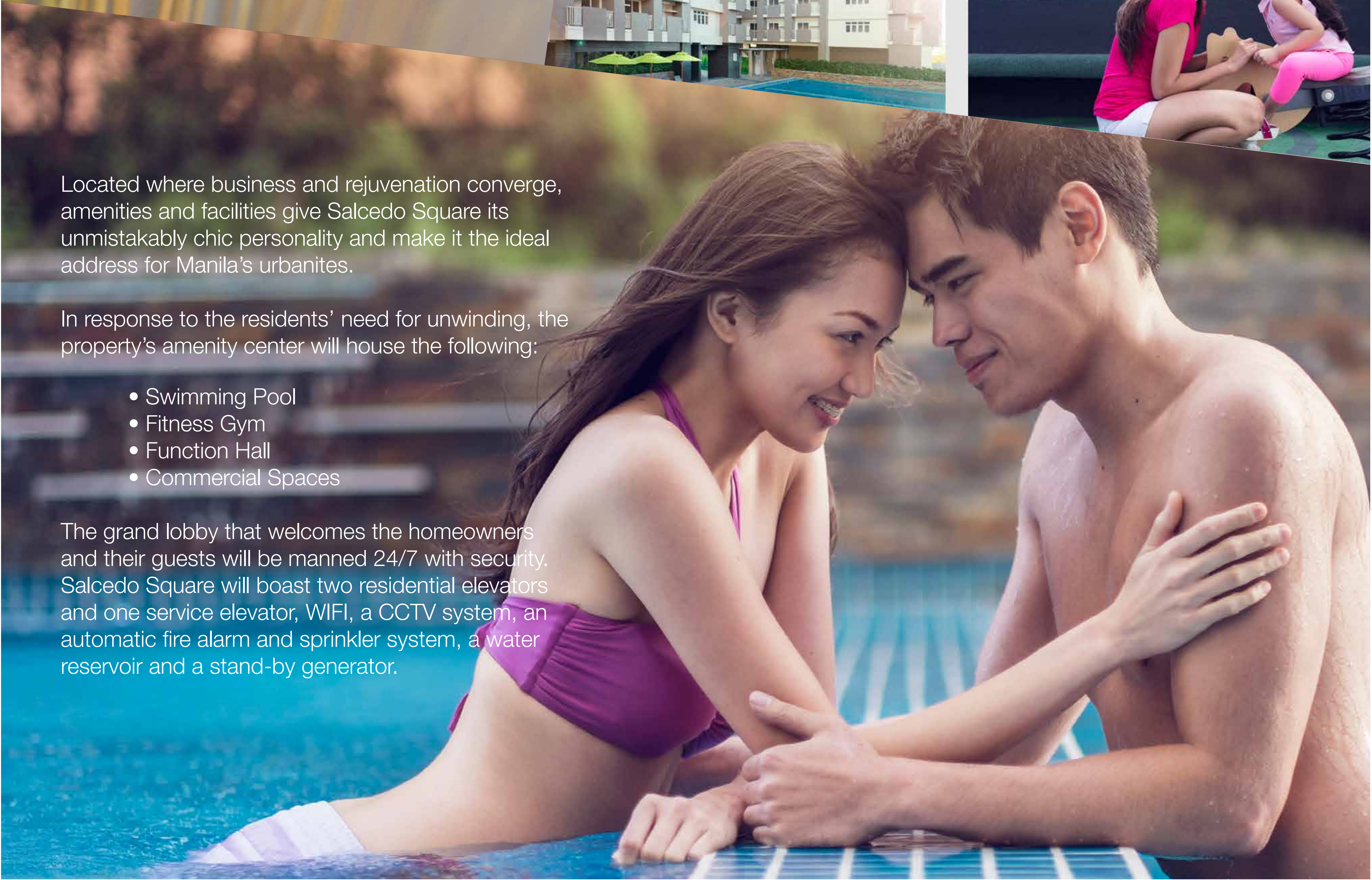


Located where business and rejuvenation converge, amenities and facilities give Salcedo Square its unmistakably chic personality and make it the ideal address for Manila's urbanites.

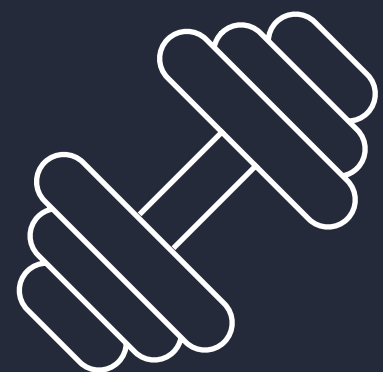
In response to the residents' need for unwinding, the property's amenity center will house the following:

- Swimming Pool
- Fitness Gym
- Function Hall
- Commercial Spaces

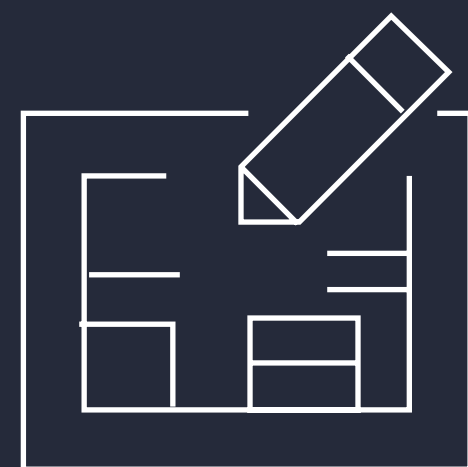
The grand lobby that welcomes the homeowners and their guests will be manned 24/7 with security. Salcedo Square will boast two residential elevators and one service elevator, WIFI, a CCTV system, an automatic fire alarm and sprinkler system, a water reservoir and a stand-by generator.



Location Map



Amenities



Unit Floor Plans



Typical Floor Plans



Unit Floor Plans



Studio
Floor Area: 22.42 sqm.



One Bedroom
Floor Area: 37.28 sqm.



One Bedroom
Floor Area: 24.40 sqm.



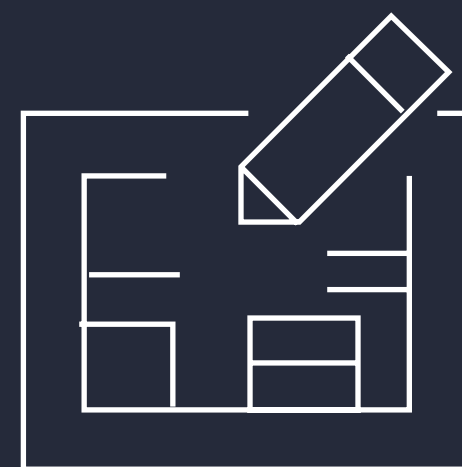
One Bedroom
Floor Area: 31.96 - 32.76 sqm.



Location Map



Amenities



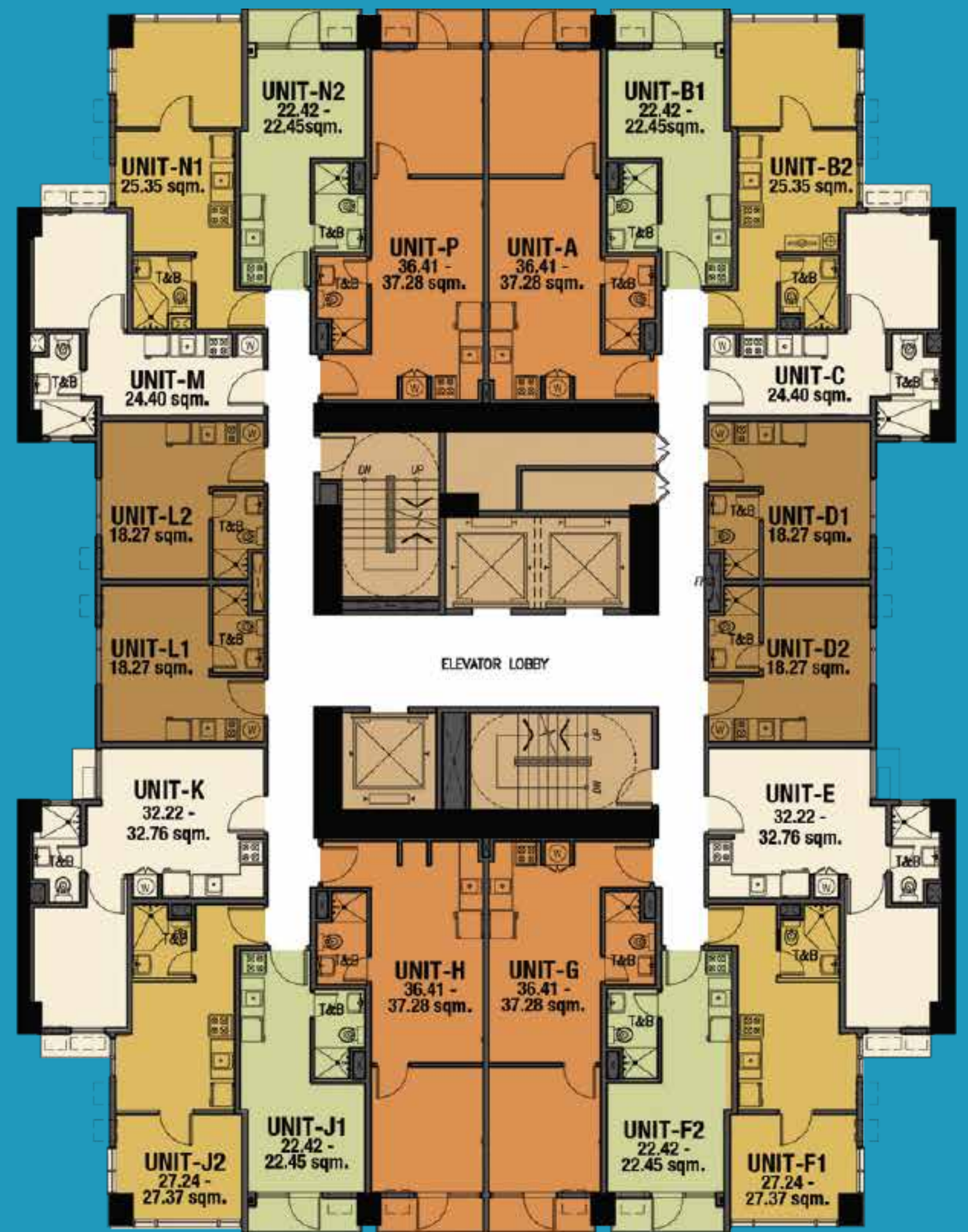
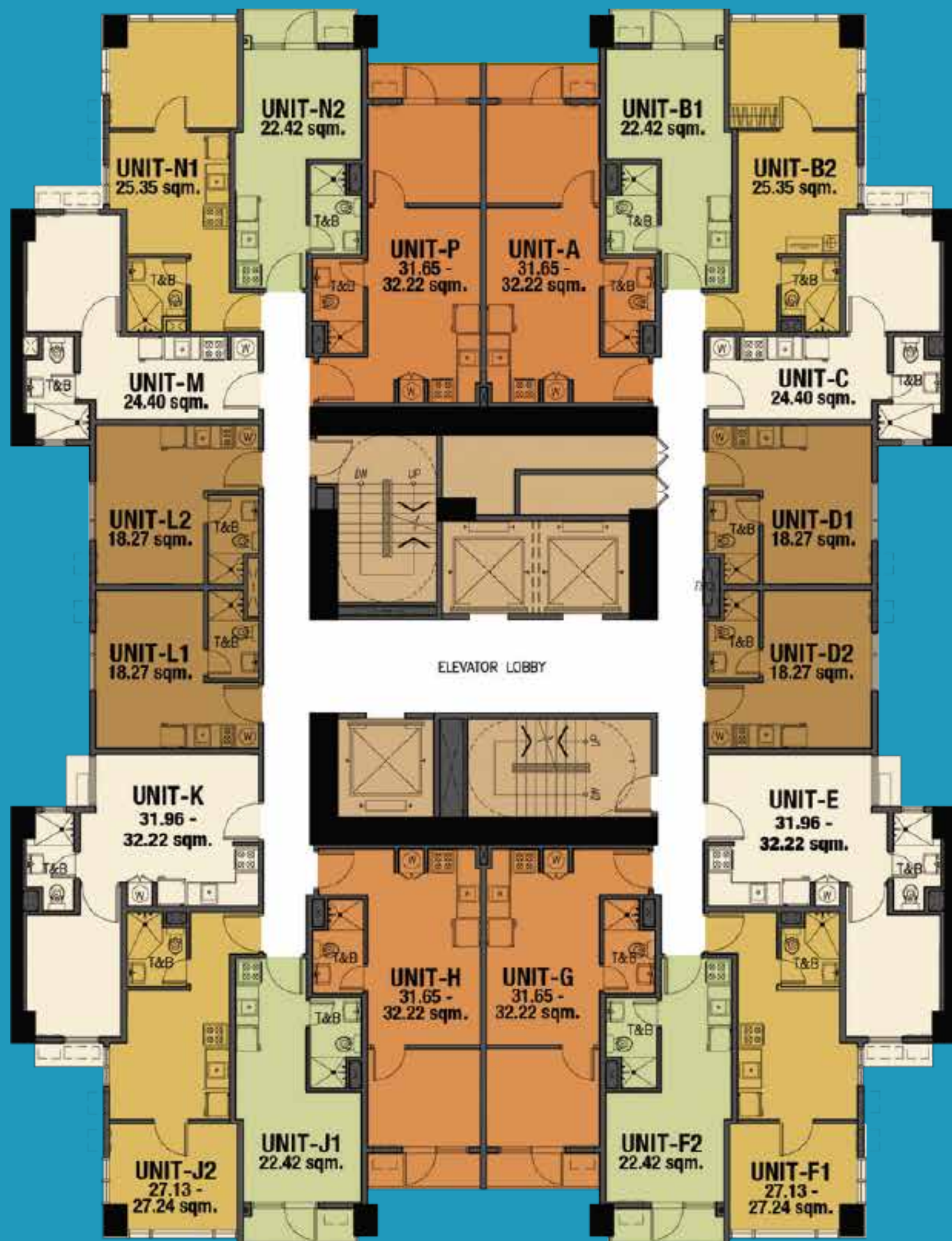
Unit Floor Plans



Typical Floor Plans



Typical Floor Plan



Designed with Punch and Personality

Salcedo Square was conceptualized with the lifestyle of today's urbanized Filipino in mind. The units go from various studio lay-outs to one-bedroom vertical residences.

Building Features:

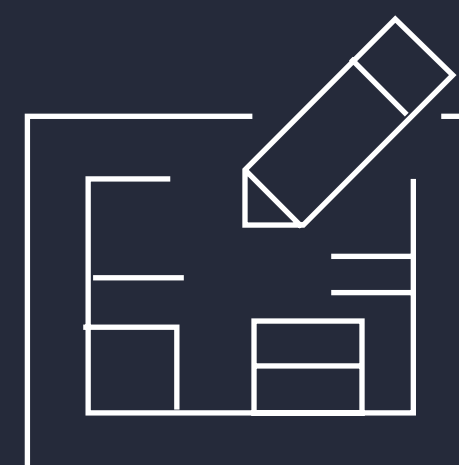
- Fire detection and alarm system
- Fire escape stairs
- Sprinkler system
- Stand-by generator
- Five-level podium parking
- WIFI on amenity area
- High-speed elevators
- 24-hour security



Location Map



Amenities



Unit Floor Plans



Typical Floor Plans